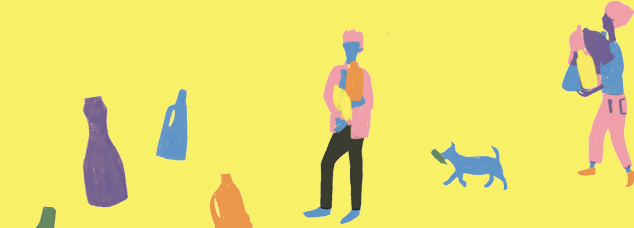


BUBBLE BUDDY

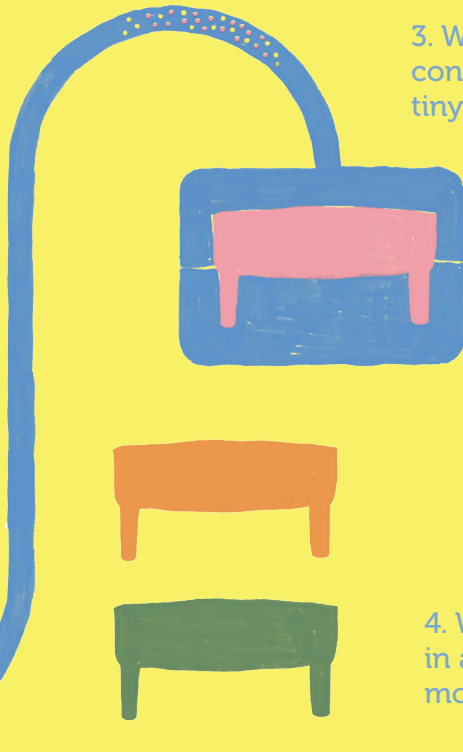


2. We shred them into confetti.

HOW IT'S MADE

1. First plastic bottles and other consumer waste is collected from plastic recycling bins.

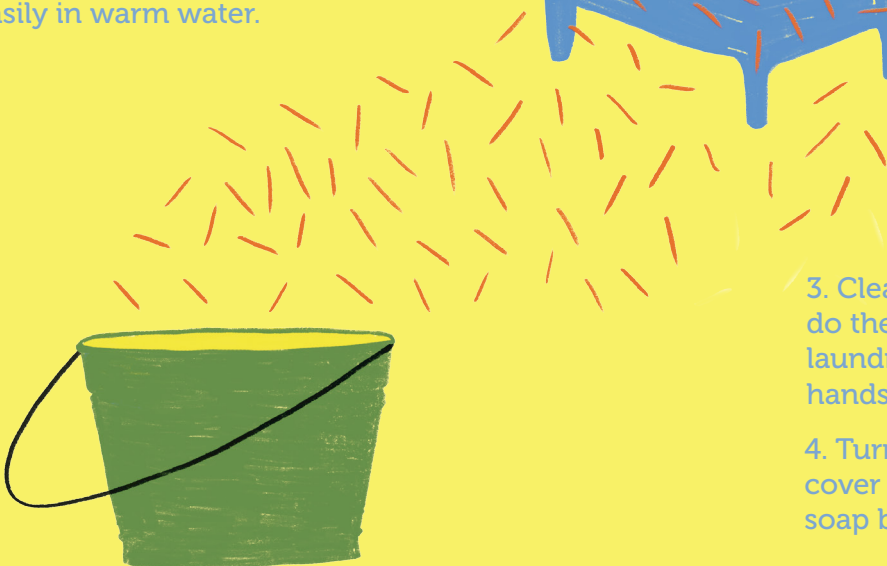
3. We melt the clean confetti down into tiny plastic balls.



4. We cast the balls in a Bubble Buddy mould.

HOW TO USE IT

1. Grate the soap bar using Bubble Buddy's cover.
2. The grated soap dissolves easily in warm water.



3. Clean your entire home, do the dishes, pre-wash your laundry, or just wash your hands.

4. Turn your Bubble Buddy's cover upside down to dry the soap bar for the next time.